

**Epping Forest
District Council**

John Gilbert M.C.I.E.H. M.R.S.H.
 Director of Environment & Street Scene
 Civic Offices, High Street
 Epping, Essex, CM16 4BZ
 Tel. 01992 564000

**Stonards Hill Recreation
 Ground, Epping, including
 the car park, Scout Hut,
 Jack Silley Pavilion car park
 tennis courts, football stand
 and ground**

DO NOT SCALE FROM THIS DRAWING. All Dimensions, levels
 and information indicated is to be verified on site prior to the
 commencement of any work.

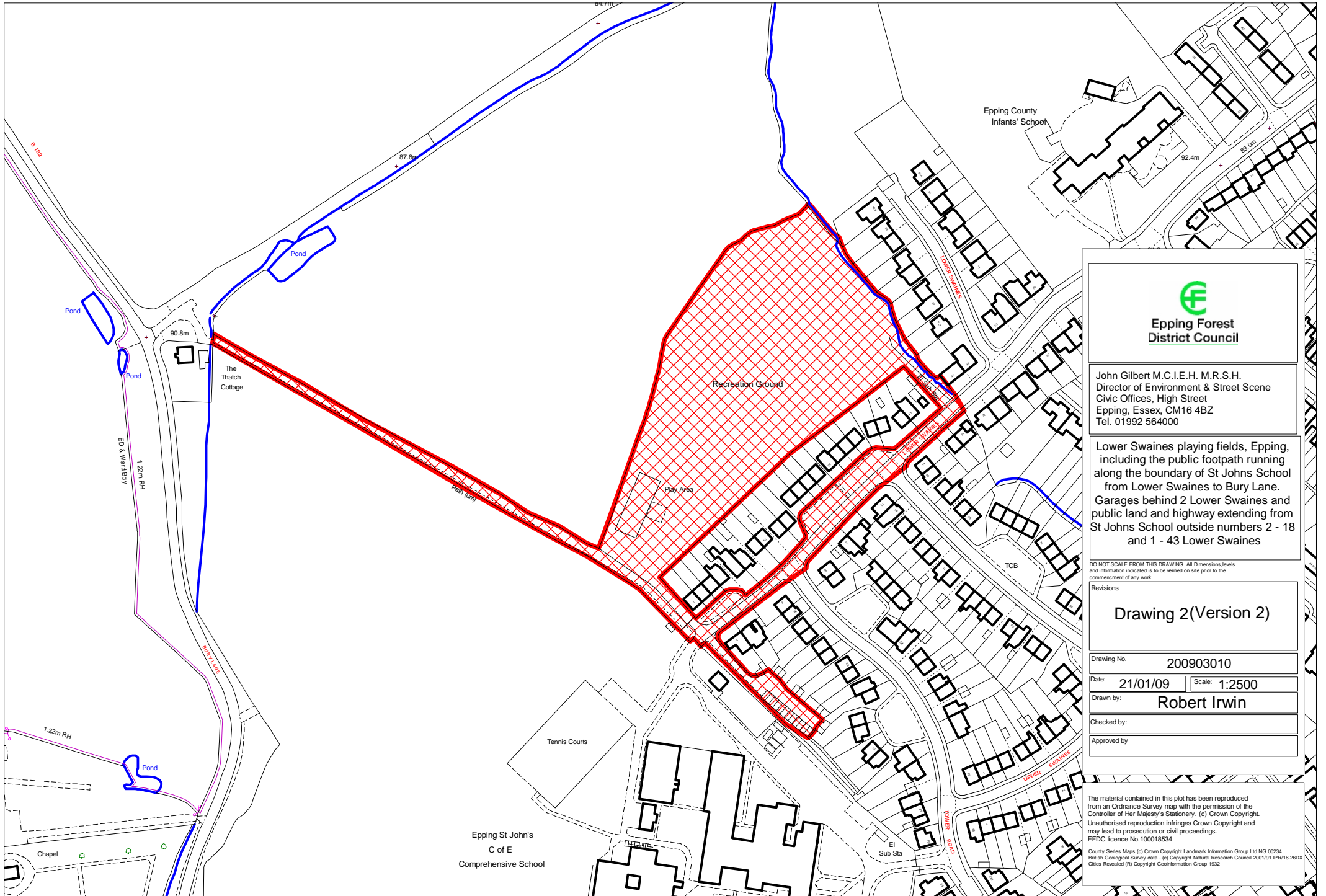
Revisions

Drawing 1 (Version 1)

Drawing No.	200903009	
Date:	14/10/08	Scale: 1:2500
Drawn by:	Robert Irwin	
Checked by:		
Approved by:		

The material contained in this plot has been reproduced
 from an Ordnance Survey map with the permission of the
 Controller of Her Majesty's Stationery. (c) Crown Copyright.
 Unauthorised reproduction infringes Crown Copyright and
 may lead to prosecution or civil proceedings.
 EFDC licence No. 100018534

County Series Maps (c) Crown Copyright Landmark Information Group Ltd NG 00234
 British Geological Survey data - (c) Copyright Natural Research Council 2001/91 IPR/16-26DX
 Cities Revealed (R) Copyright Geoinformation Group 1992



John Gilbert M.C.I.E.H. M.R.S.H.
 Director of Environment & Street Scene
 Civic Offices, High Street
 Epping, Essex, CM16 4BZ
 Tel. 01992 564000

Lower Swaines playing fields, Epping, including the public footpath running along the boundary of St Johns School from Lower Swaines to Bury Lane. Garages behind 2 Lower Swaines and public land and highway extending from St Johns School outside numbers 2 - 18 and 1 - 43 Lower Swaines

DO NOT SCALE FROM THIS DRAWING. All Dimensions, levels and information indicated is to be verified on site prior to the commencement of any work.

Revisions

Drawing 2 (Version 2)

Drawing No. 200903010
 Date: 21/01/09 Scale: 1:2500
 Drawn by: Robert Irwin
 Checked by:
 Approved by:

The material contained in this plot has been reproduced from an Ordnance Survey map with the permission of the Controller of Her Majesty's Stationery. (c) Crown Copyright. Unauthorised reproduction infringes Crown Copyright and may lead to prosecution or civil proceedings. EFDCC Licence No: 100018534
 County Series Maps (c) Crown Copyright Landmark Information Group Ltd NG 00294
 British Geological Survey data - (c) Copyright Natural Research Council 2001/01 IP/16-260X
 Cities Revealed (R) Copyright GeoInformation Group 1932